

T855 & T1055

Tuthill's T855 and T1055 transport blowers are designed for the loading and unloading of cement, powders, crushed limestone, sand, and granular materials. They offer customers:

- Rugged construction and lasting performance
- Solid made-in-the-USA dependability
- Versatility to unload a variety of materials
- Quiet operation through built-in silencing chambers for noise reduction
- Optimized weight that keeps our highest quality parts, yet weighs 40 pounds less than previous models

Features

IP69K Rated Breather

Industry leading breather designed to withstand high-pressure and steam cleaning to keep water out of oil.

Fewer Oil Changes

The largest transport blower oil sumps belong to Tuthill. Gain more efficiency with fewer oil changes and spend more time hauling. The larger sumps also mean better cooling than previous models.

Highest Efficiency Lobe Blower

Less HP is required to run the T855/T1055 making it up to 15% more efficient than other competitive blowers, saving you overall fuel costs.

Longest Bearing Life

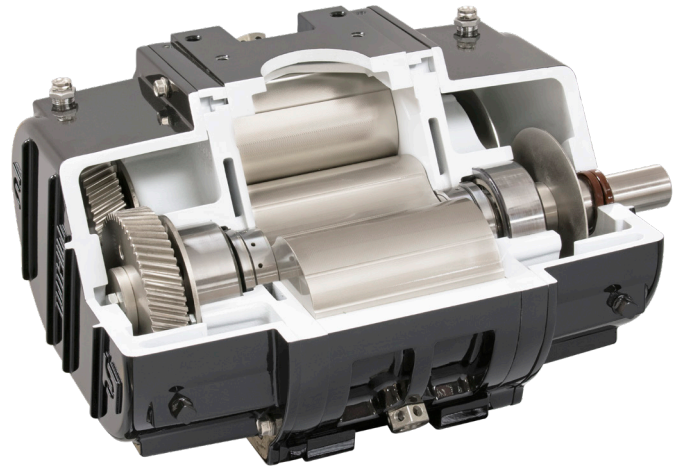
Experience the toughest transport blower on the market! A design with larger bearings than competitive brands delivers a reliable machine with a longer life cycle. Tuthill's bearing basic load rating is significantly higher with over eight pounds of additional bearing mass than the closest competitor. These quality bearings can translate into hundreds of dollars saved in maintenance costs over time.

Simple Design

The T855/T1055 design has fewer sealing surfaces which means there are fewer parts, fewer leak paths, and fewer areas that could allow salt or debris to collect and corrode.

Lighter Weight

Tuthill transport blower weights are now within a fraction of other competitive models. The new design exhibits an optimal balance between efficiency and rugged construction that allows you to carry an additional 40 lbs per load.



T855 Specifications:

Air Flow: 250 -1000 CFM*

RPM Range: 1000 -3000

Pressure: 20 psi continuous

Vacuum: 17" Hg continuous

Blower Weight: 376 lbs. dry
(380 lbs. with 66 oz. oil)

Dimensions: 22.7"L x 12.13"H x 17.97"D

Warranty: 18/12 months

T1055 Specifications:

Air Flow: 450 -1300 CFM*

RPM Range: 1450 -3000

Pressure: 18 psi continuous

Vacuum: 17" Hg continuous

Blower Weight: 446 lbs. dry
(450 lbs. with 66 oz. oil)

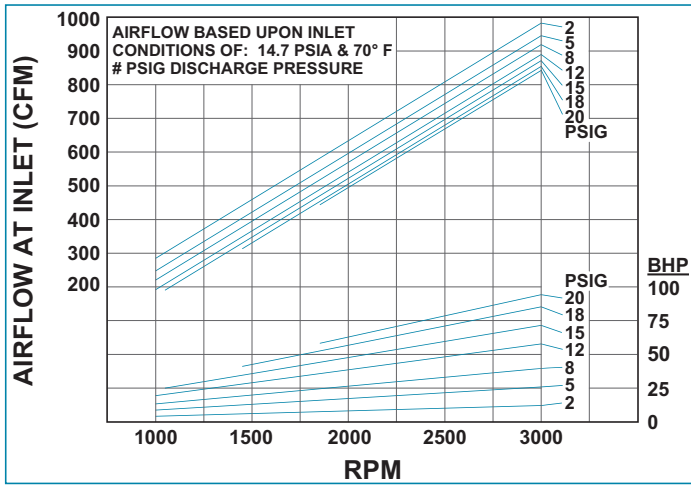
Dimensions: 25.2"L x 12.13"H x 17.97"D

Warranty: 18/12 months

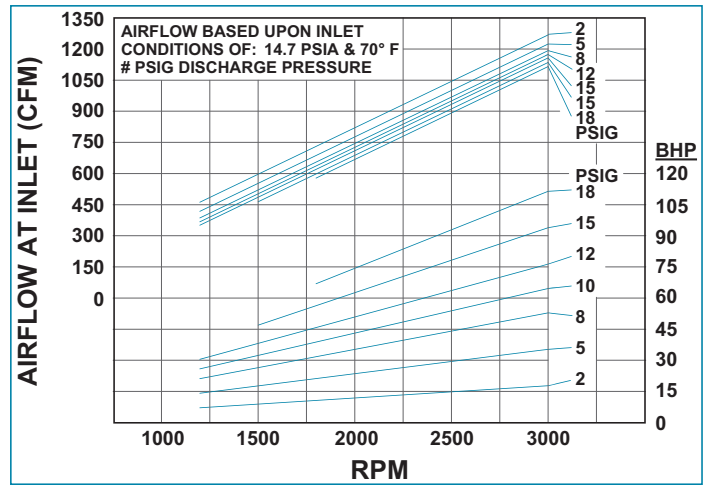
* Refer to flow curves for minimum RPM at specific pressures. Higher pressures require higher RPMs.

Pressure and Vacuum Curves

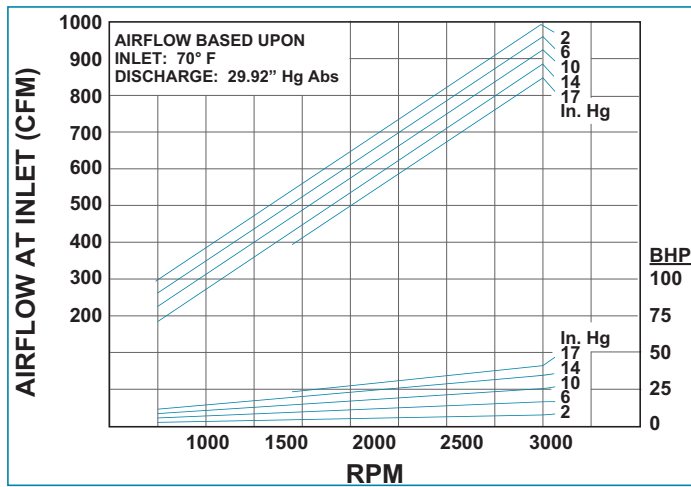
T855 Pressure Curve



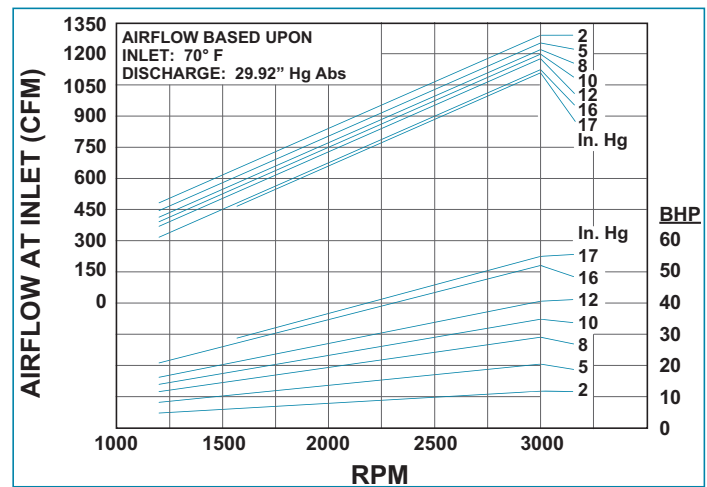
T1055 Pressure Curve



T855 Vacuum Curve



T1055 Vacuum Curve



Oil Capacities

Location	Horizontal Air Flow (Standard)	Vertical Air Flow (Standard)
Drive End	1.06 quarts / 34 oz. / 1005.5 mL	1.68 quarts / 54 oz. / 1597 mL
Non-Drive (Gear) End	1 quart / 32 oz. / 946.3 mL	1.75 quarts / 56 oz. / 1656 mL

Every Transport Blower is shipped with 1 gallon of Tuthill MD full synthetic oil to ensure the very best lubrication of bearings, gears, and seals.

Your Local Tuthill Vacuum Blower Systems Sales Professional:



Tuthill Springfield
4840 West Kearney Street
Springfield, Missouri USA 65803-8702
o 417.865.8715 800.825.6937 f 417.865.2950
tuthillvacuumblower.com

