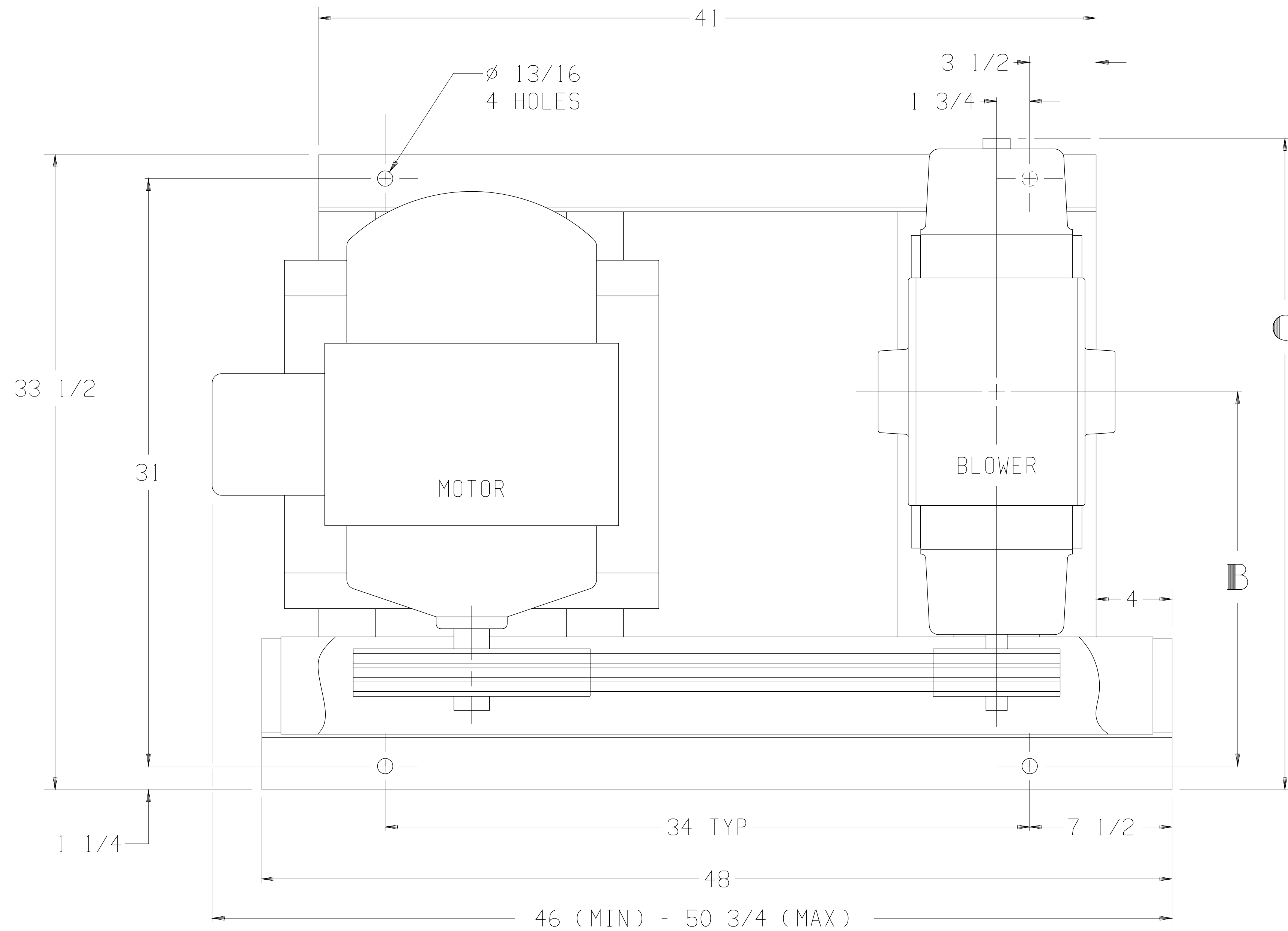


LTR	REVISION	DATE	DR	CH
D	REMOVED 16 SERIES (ECN 4767)	7-27-06	CM	CM



BLOWER	A	B	C
4006-17/57	3 NPT	16 3/4	—
4009-17/57	3 NPT	18 1/4	—
4012-17/57	4 NPT	19 3/4	34 3/8

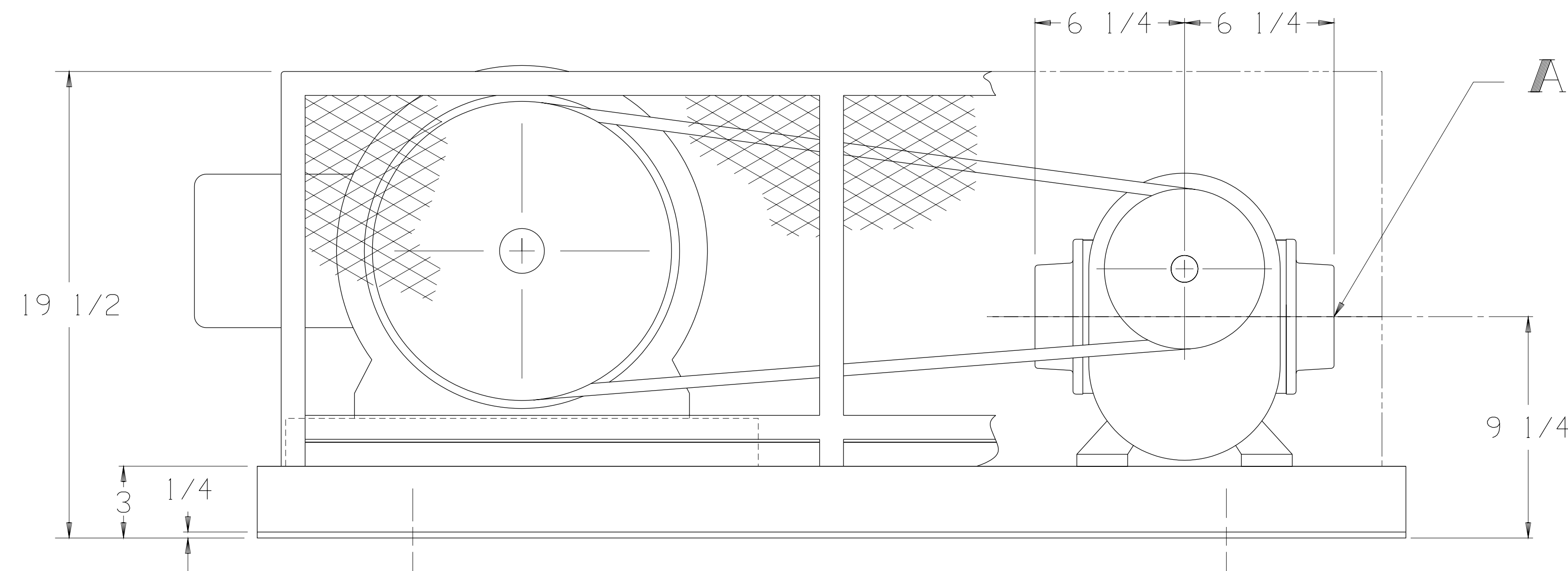
MOTOR W/SLIDE BASE  
1800 RPM, 230/460 V, 3 PH, 60 HZ

HP	FRAME	TYPE
15	254T	ODP
20	256T	TEFC
25	284T	TEXP
30	286T	SEVERE DUTY TEFC
		SEVERE DUTY TEXP

APPROXIMATE WEIGHT

BASE, DRIVE, & GUARD - 148 LBS  
 BLOWER - \_\_\_\_\_ LBS  
 MOTOR & SLIDE BASE - \_\_\_\_\_ LBS

TOTAL WEIGHT - \_\_\_\_\_ LBS



A FEMALE NPT  
INLET & OUTLET

THIS OUTLINE APPLIES TO THE BLOWERS  
AND MOTORS SHOWN IN TABLES

**Tuthill** 800.825.6937

BASE MOUNTED OUTLINE B4000HV2

SIZE: C2

DR SY 9-1-88 CH CM 9-2-88