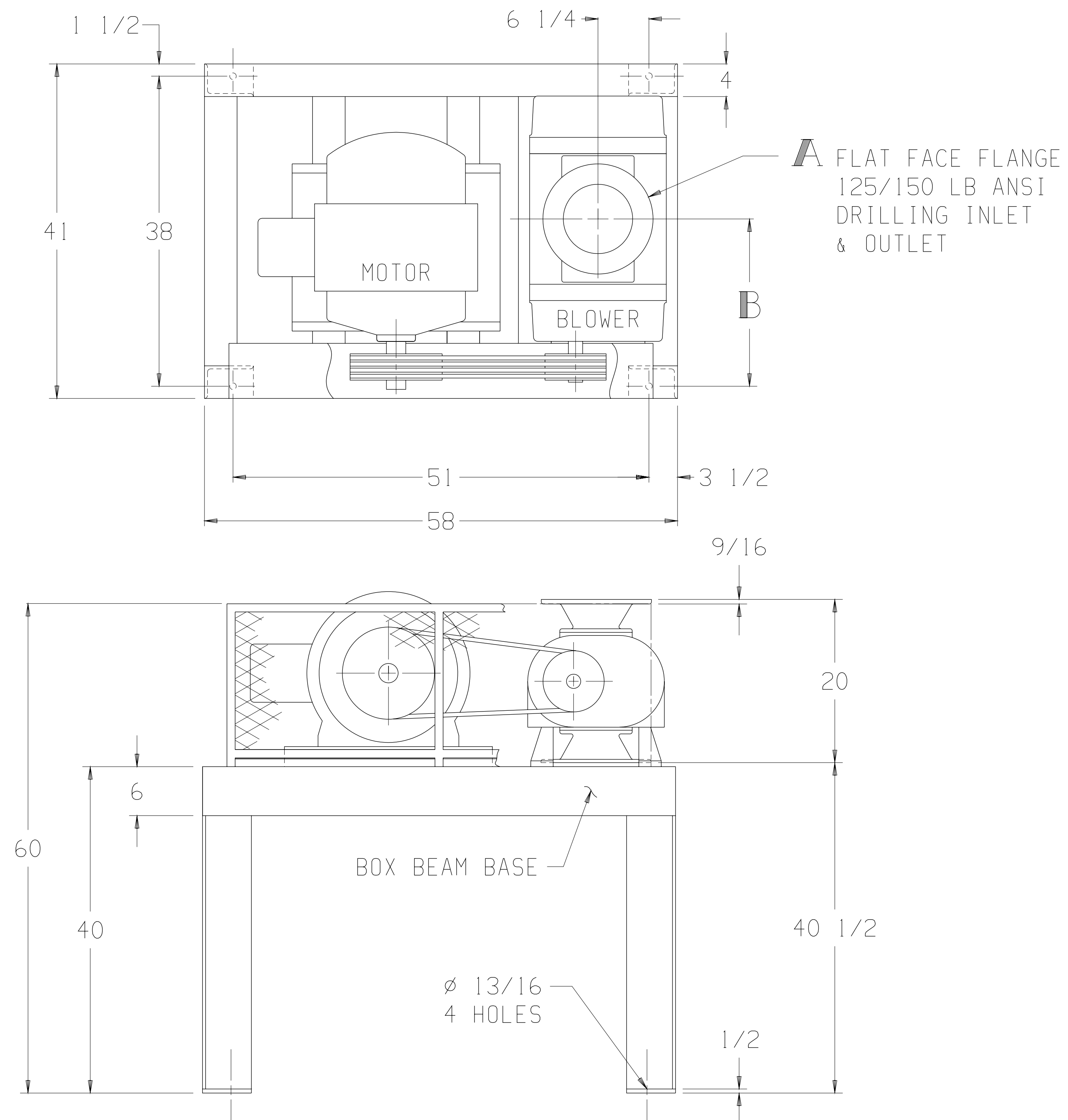


LTR	REVISION	DATE	DR	CH
B	REDRAWN PER ECN 1143	9-18-89	LM	LB
C	ADDED 67 SERIES & DIMENSIONS AND CHANGED WHERE SOME DIMS WERE LOCATED FROM (ECN 2118)	6-25-93	CM	SY
D	REMOVED 47 SERIES (ECN 4739)	7-19-06	CM	CM



MOTOR W/SLIDE BASE 1800 RPM. 230/460 V. 3 PH. 60 HZ		
HP	FRAME	TYPE
40	324T	ODP
50	326T	TEFC
60	364T	TEXP
75	365T	SEVERE DUTY TEFC
		SEVERE DUTY TEXP

BLOWER	A	B
5514-46/81	6 FLG	20 <sup>5</sup> / <sub>8</sub>
5516-46/81	8 FLG	21 <sup>5</sup> / <sub>8</sub>
5518-46/81	8 FLG	22 <sup>5</sup> / <sub>8</sub>
5514-67 <sup>1</sup>	6 FLG	21 <sup>3</sup> / <sub>8</sub>
5516-67 <sup>1</sup>	8 FLG	22 <sup>3</sup> / <sub>8</sub>
5518-67 <sup>1</sup>	8 FLG	23 <sup>3</sup> / <sub>8</sub>

APPROXIMATE WEIGHT

BASE, DRIVE & GUARD-	628	LBS
BLOWER	-	LBS
MOTOR & SLIDE BASE	-	LBS
TOTAL WEIGHT	-	LBS

NOTE:

<sup>1</sup> MOTORS FOR 67 SERIES BLOWERS ARE LIMITED TO 50 HORSEPOWER MAXIMUM.

THIS OUTLINE APPLIES TO THE BLOWERS & MOTORS SHOWN IN TABLES

**Tuthill** 800.825.6937

BASE MOUNTED OUTLINE B5500VV3L

SIZE:  
C2

DR LM 5-26-89

CH LB 6-1-89