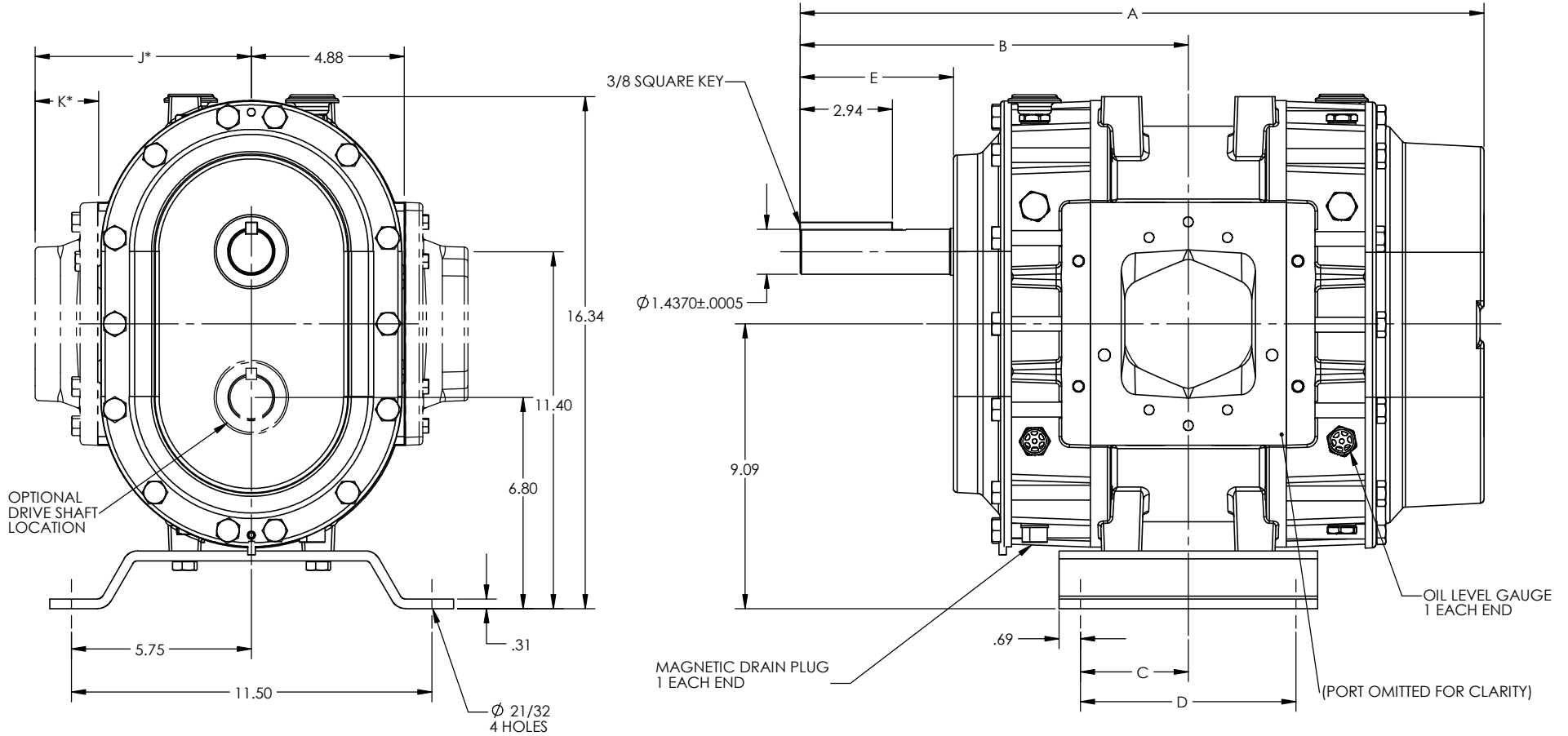


OPTIONAL PORT KITS*									
4504					4506				
KIT PN	NPT	J	K	WT	KIT PN	NPT	J	K	WT
93337	4"	9.02	4.15	11	93338	4"	6.94	2.03	11
					93339	4"	10.94	6.03	19
4509					4512				
93340	4"	6.94	2.03	17	93343	6"	7.63	2.72	19
93341	5"	12.47	7.56	28	93344	6"	13.19	8.28	36
93342	5"	7.84	2.93	15					

BLOWER MODELS						
MODEL NO.	A	B	C	D	E	WEIGHT
4504-17	18.45	10.02	2.44	4.88	3.52	270
4506-17	21.82	12.39	3.44	6.88	4.89	310
4509-17	24.80	13.87	3.44	6.88	4.89	350
4512-17	27.81	15.38	4.94	9.88	4.89	390

*OPTIONAL PORT KITS INCLUDE ONE PORT AND MOUNTING HARDWARE. WITHIN A GIVEN MODEL NO., PORT KITS MAY BE MIXED AND MATCHED.



(TOP DRIVE 4506 SHOWN)

Tuthill 800.825.6937	
TITLE: EQUALIZER DF OUTLINE	
SIZE: C	DWG. NO. 4500-17
DN: SM DATE: 1-29-04	CK: LD DATE: 1-29-04
SCALE: 1:2.5	